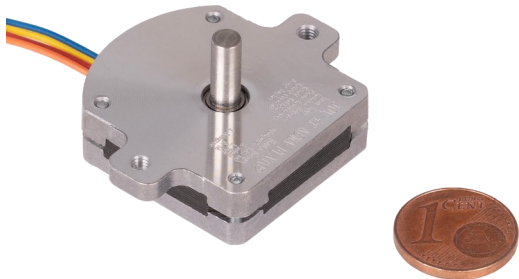


FLAT NEMA STEPPER

NEMA-FLAT02



These ultra-flat stepper motors have been specially developed for the feeders in semiconductor production.

But also in other areas with limited space, these flat stepper motors can be used very well.

MAIN FEATURES

Single shaft	Ø 4 x 10 mm
Interface connection	4 pin JST cable connector
Special features	ultraslim design
Dimensions	33 x 40 x 9.5 mm
Items delivered	1x NEMA-FLAT02 stepper motor

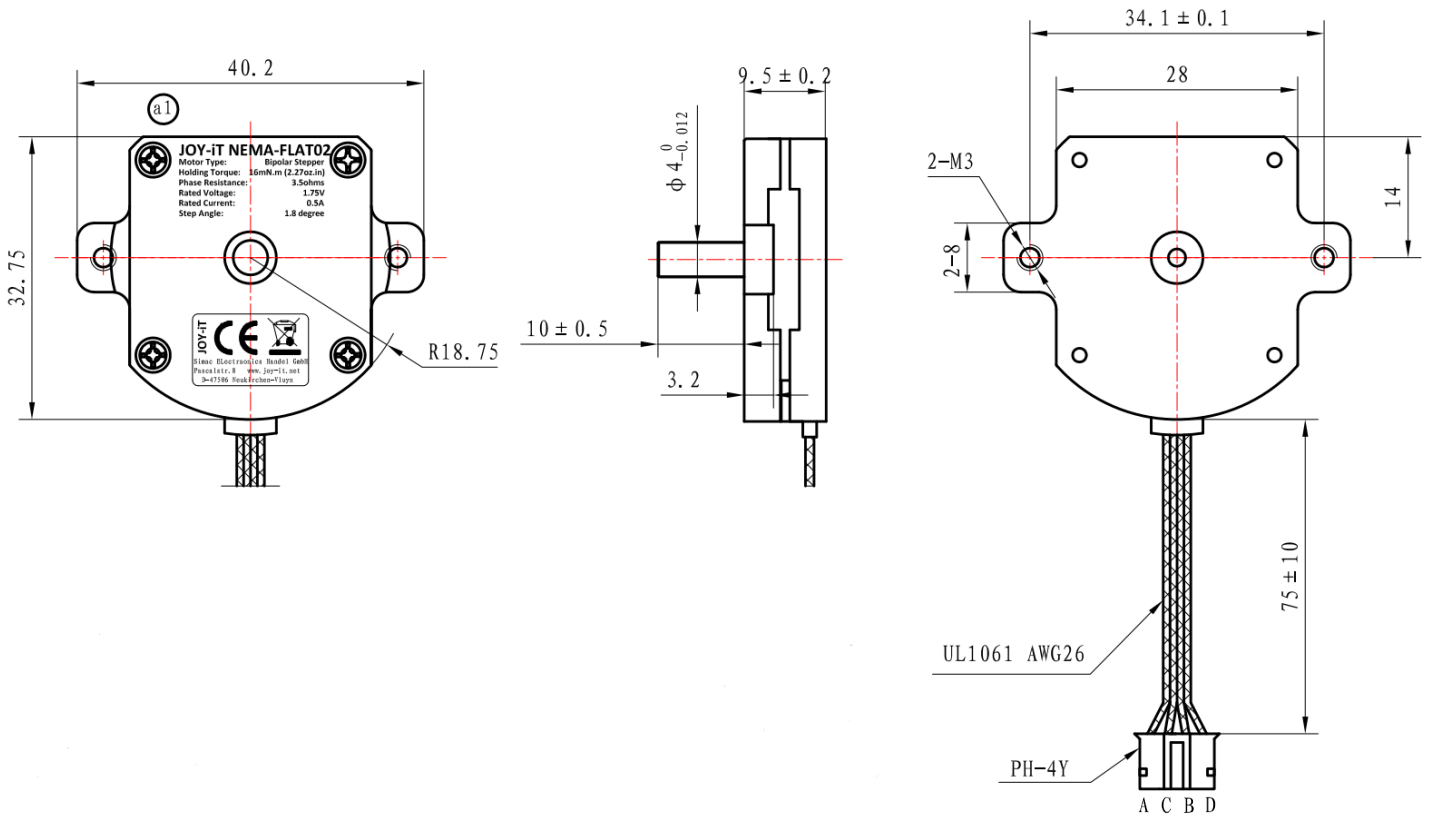
PERFORMANCE SPECIFICATIONS

Holding torque	16 mNm
Rated Voltage	1.75 V
Rated Current	0.5 A
Step Angle	1.8° ±5 %
No. of Phases	2
Phase Resistance	3.5 Ω
Phase inductivity	0.9 mH
Isolation resistance	100 MΩ min. @500 V DC
Isolation class	B (130°)
Rotational inertia	2 g·cm ²
Detent Torque	2 mNm
Operating temperature	-10 °C - 50 °C

FURTHER DETAILS

Article No.	NEMA-Flat02
EAN:	4250236821658
Customs Tariff No.	8501109990

DRAWING



WIRING

