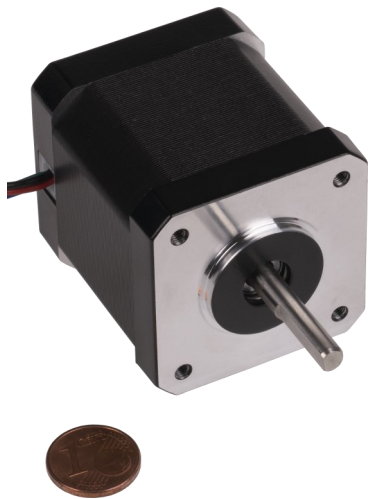


NEMA17 STEPPER MOTOR

NEMA17-06



Our NEMA 17 series are very small high torque stepper motors that can reach speeds of up to 3000 rpm.

This stepper motor can be optimally used for tasks in the areas of Automation, CNC (f. e. engraving lasers, 3D printers, milling machines, etc.), or robotic.

MAIN FEATURES

Shaft	Ø 5 x 22 mm (4 mm flat spot)
Interface connection	4 wire
Dimensions	42 x 42 x 48 mm
Items delivered	NEMA17 stepper, connection cable

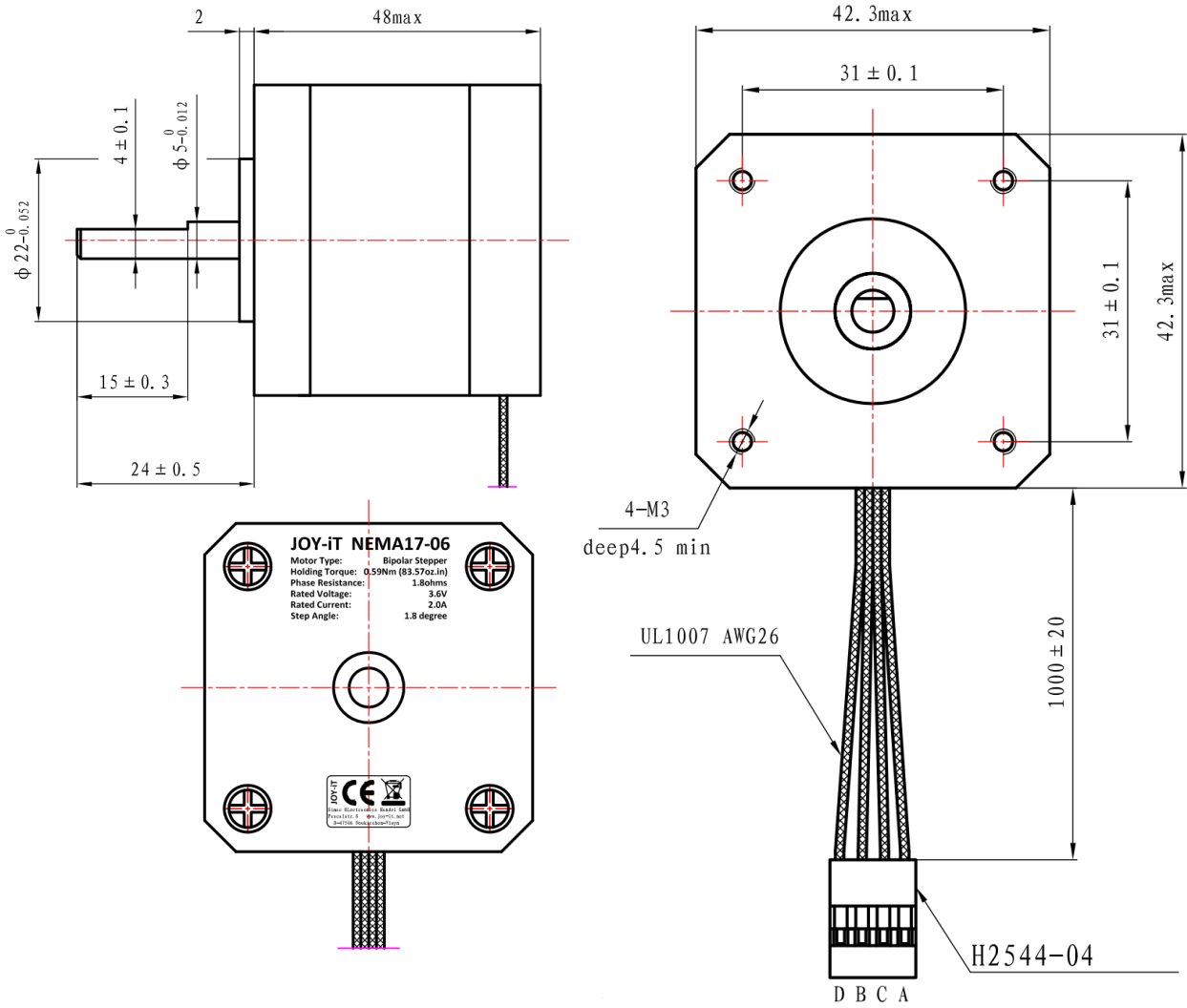
PERFORMANCE SPECIFICATIONS

Holding torque	0,59 Nm
Rated Voltage	3.6 V
Rated Current	2.0 A
Step Angle	1.8 ° ±5 %
No. of Phases	2
Phase Resistance	1.8 Ω
Phase inductivity	3.0 mH
Isolation resistance	100 MΩ min. @500 V DC
Isolation class	B (130 °C)
Rotational inertia	82 g·cm ²
Detent torque	0.02 Nm
Operating temperature	-10 °C - 50 °C

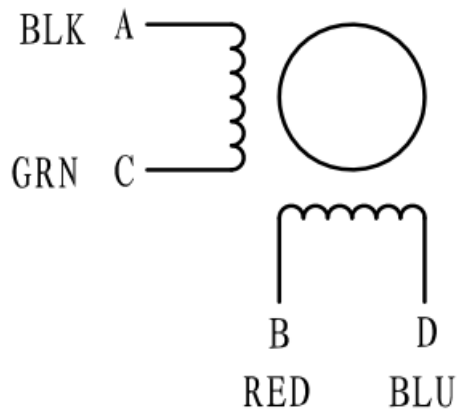
FURTHER DETAILS

Article No.	NEMA17-06
EAN:	4250236821733
Customs Tariff No.	8501109990

DRAWING



WIRING



TORQUE DIAGRAM

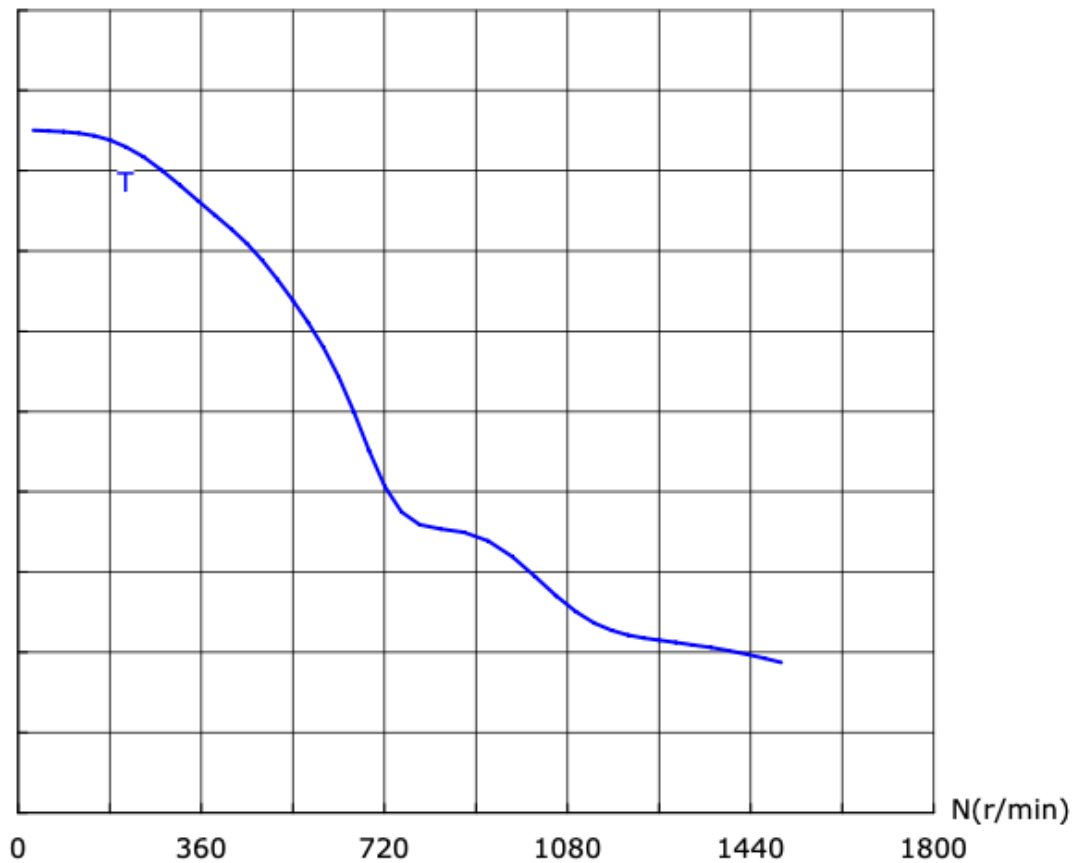
2H-422 DRIVER SETTINGS

Voltage 23,82 V

max. current 2,2 A

T(mN.m)

600
540
480
420
360
300
240
180
120
60



MAX. EFFICIENCY

Efficiency	98,3 %
Torque	112,5 mNm
Current	0,842 A
Speed	1500 min ⁻¹
Output power	17,676 W

MAX. TORQUE

Torque	510,4 mNm
Current	0,623 A
Speed	30 min ⁻¹
Output power	1,603 W

MAX. POWER

Torque	366,6 mNm
Current	1,211 A
Speed	570 min ⁻¹
Output power	21,704 W

Published: 18.02.2022